

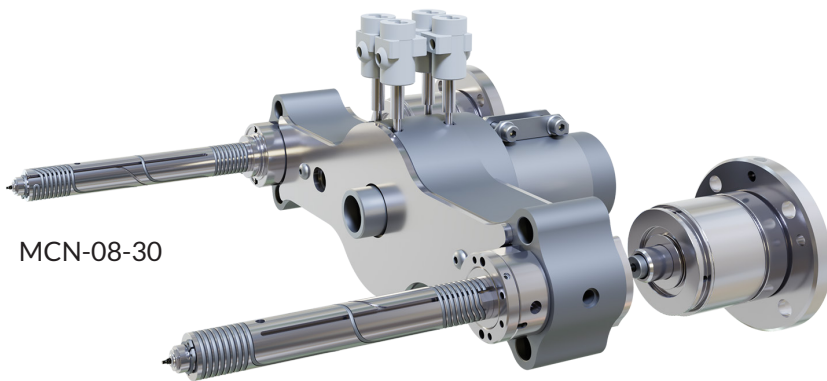


BARNES™
MOLDING SOLUTIONS

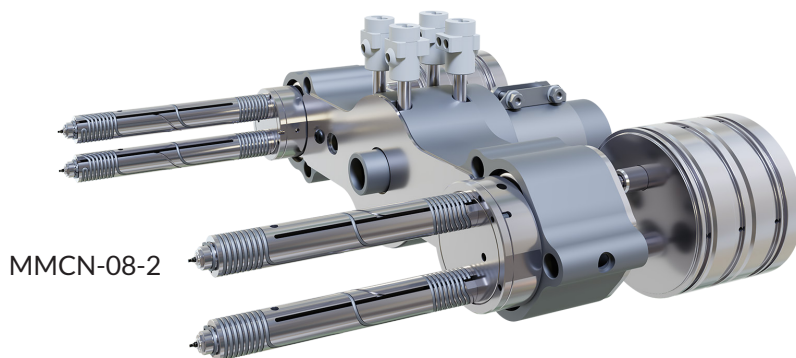
HOT RUNNER TECHNOLOGY

08 Nozzle Series

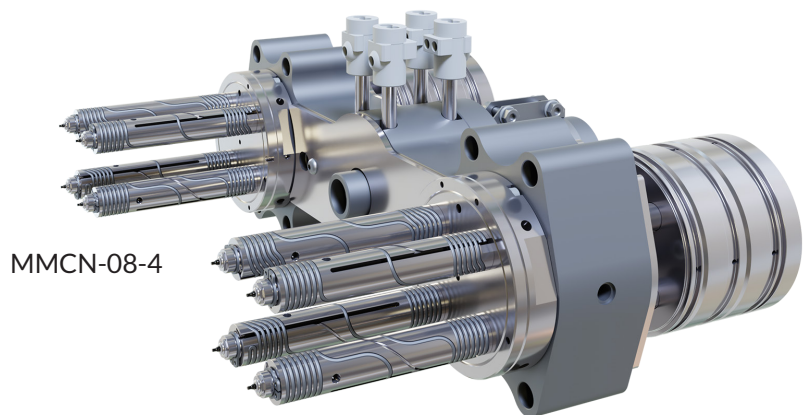
Product Catalog



MCN-08-30



MMCN-08-2



MMCN-08-4



Table of Contents

Hot Runner Technology	3
General Description of the Nozzle	3
General Description of 08 Nozzle Series	3
Target Group	3
Applied Standards and Norms	3
Tolerances and Customer Graphics	3
Bolt Down Manifold	4
Available Actuator PS 40.2 pneumatic	5
Standard Nozzle Tip	5
Cutout Dimensions	6
One Drop Nozzle	7
Two Drops Nozzle	8
Four Drops Nozzle	9
Contact	10
Copyright	10
Patents	10



Hot Runner Technology

This catalog gives an overview of the latest product, including descriptions, dimensions and technical data. The text next to the graphics gives additional instructions on the use of the product. If available, options are explained with pictures and text. All available accessories for this product are specified. Where necessary, a separate chapter gives the information and important technical data.

General Description of the Nozzle

Hot runner nozzles are the connection to the cavity. They either gate directly into the part or into a sub runner which will feed into the cavity.

General Description of 08 Nozzle Series

This is a standard Molding solutions Nozzle.

Target Group

The target groups of this product catalog are mold designers, toolmakers, molders and service technicians. They will find the needed information in the relevant chapters.

Applied Standards and Norms

- DIN EN IEC/IEEE 82079-1 Edition 2 Creation of usage information for products
- Standard and norms for Technical drawings

Tolerances and Customer Graphics

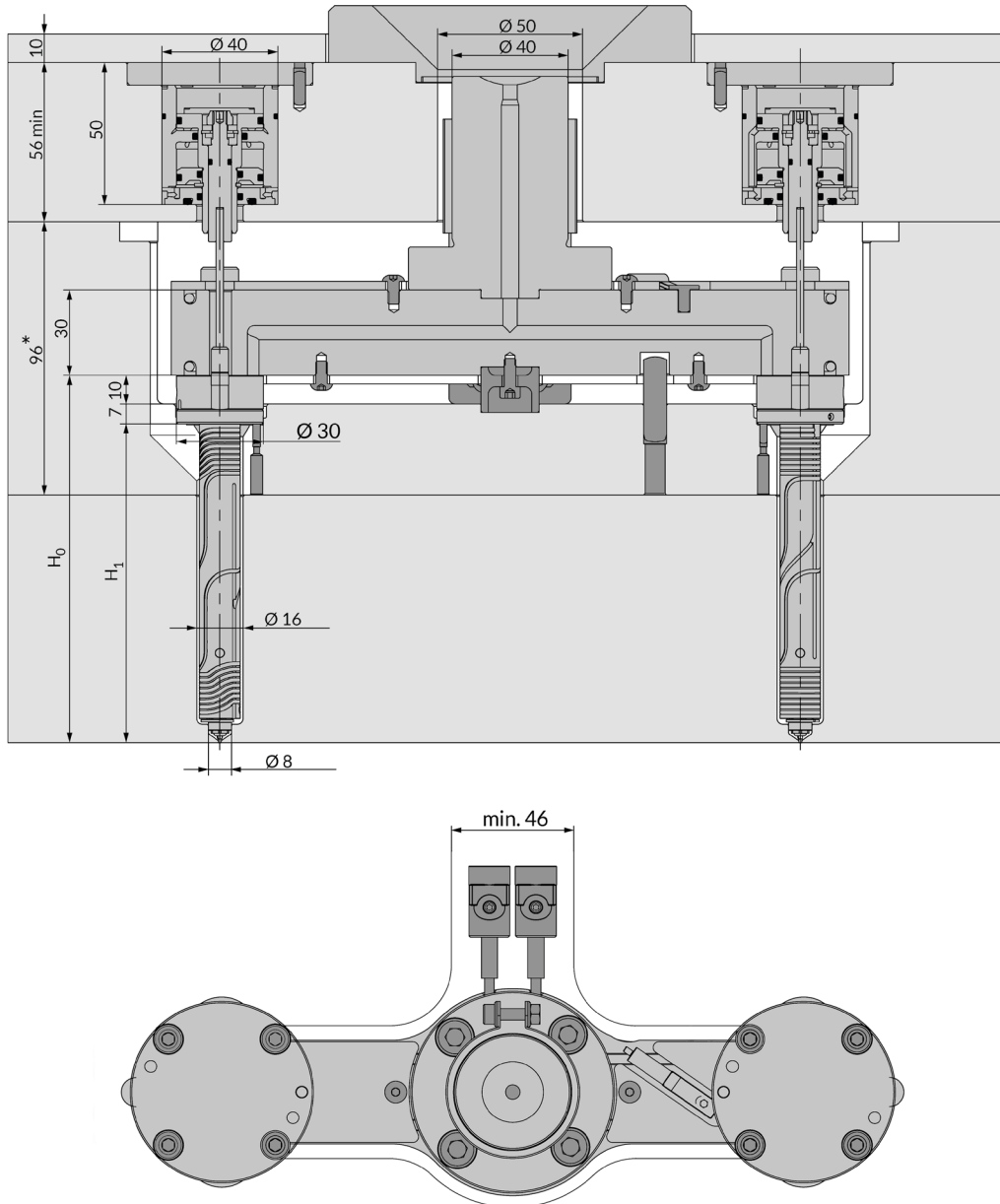
The product catalog gives a general information about the product. For tolerances and other details, use the customer drawings. There you find the detailed information.



Illustrations simplified, schematically drawn and not to scale. All dimensions in mm.

Bolt Down Manifold

The following picture shows the standard design, components and dimensions.



*

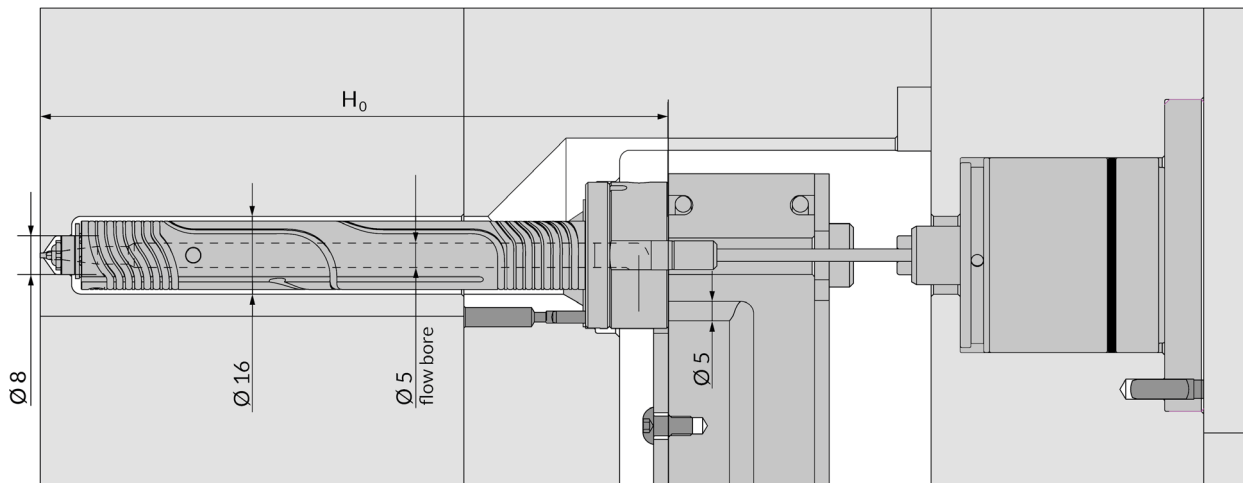
Hot Runner Plate height depending to H1.



Illustrations simplified, schematically drawn and not to scale. All dimensions in mm.

Available Actuator PS 40.2 pneumatic

The following standard actuator is available. Other actuators can be used on request.



Technical Data

Pressure:
6 bar (87 psi)
Min/Max Close Forces:
F open max = 589 N
F close max = 695 N
Stroke:
8 mm

Standard Nozzle Tip

Valve gate - Straight pin - Plunged Through

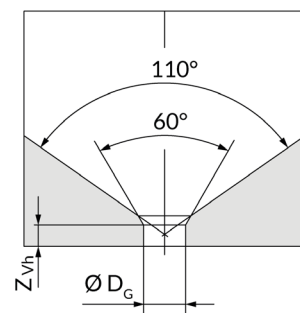
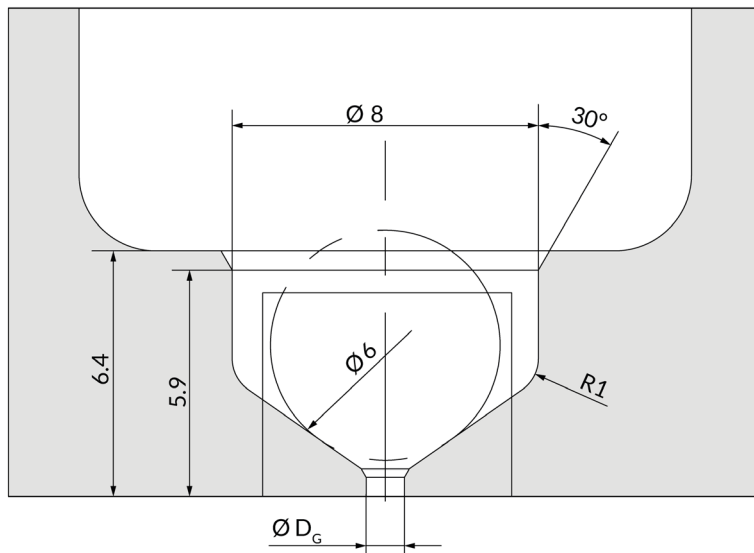
Tip Style with Description	Picture	Gate diameter
Standard		Ø 0,8 Ø 1,0 Ø 1,2



Illustrations simplified, schematically drawn and not to scale. All dimensions in mm.
Dimensions for reference only. Reference system drawing for complete dimensions prior to machining gate detail in mold.

Cutout Dimensions

The following pictures shows the cutout dimensions for this nozzle.

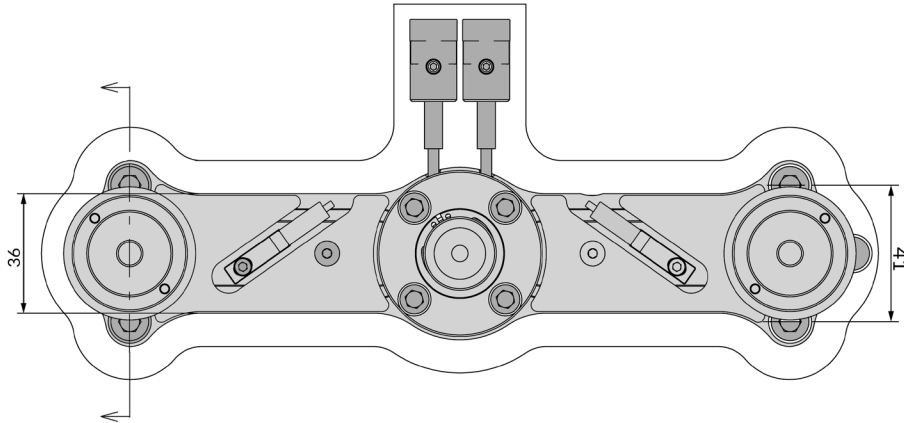


Abbr.	Written out
Dg	Gate Diameter
Zvh	Cylindrical Gate height

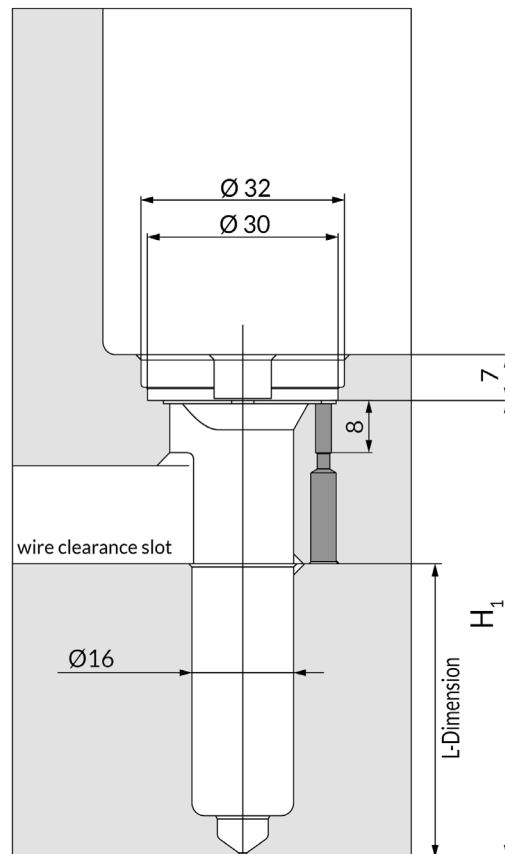
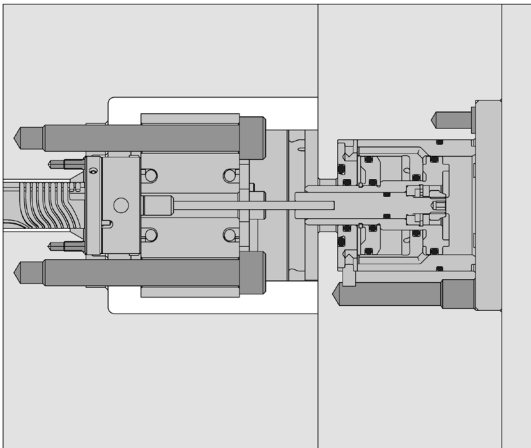


Illustrations simplified, schematically drawn and not to scale. All dimensions in mm.

One Drop Nozzle



MCN-08-30			
H ₀	H ₁	Code	DTE Watt
079	62	MCN-08-30-S8-079	180 W
104	87	MCN-08-30-S8-104	280 W
129	112	MCN-08-30-S8-129	380 W
154	137	MCN-08-30-S8-154	420 W
179	162	MCN-08-30-S8-179	420 W
204	187	MCN-08-30-S8-204	420 W
229	212	MCN-08-30-S8-229	500 W

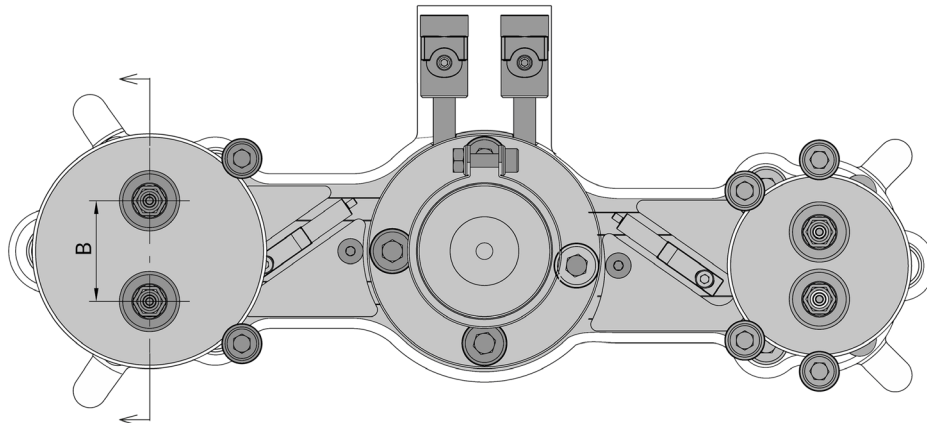




Illustrations simplified, schematically drawn and not to scale. All dimensions in mm.

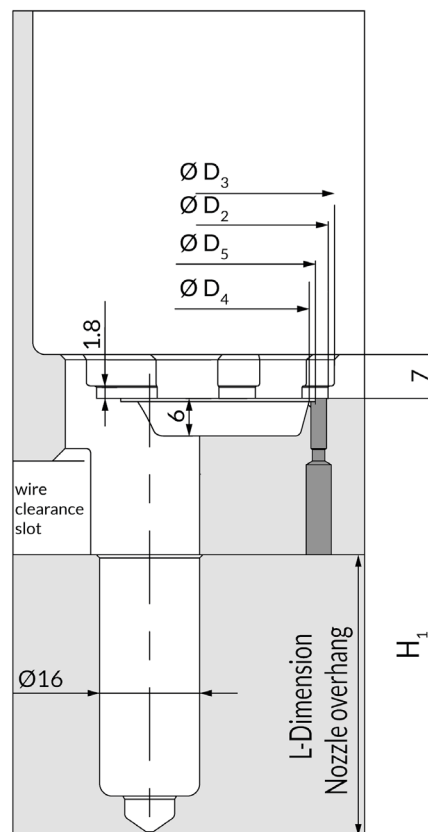
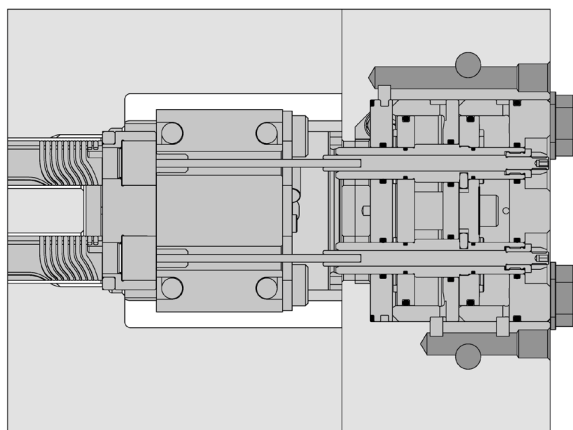
Two Drops Nozzle

The actuator PS 50.2 or PS 70.2 is used.



MMCN-08-2				
H ₀	H ₁	B	Code	DTE Watt
79	62	16	MMCN-08-2_16-S8-079	180 W
		20	MMCN-08-2_20-S8-079	180 W
		25	MMCN-08-2_25-S8-079	180 W
		30	MMCN-08-2_30-S8-079	180 W
104	87	16	MMCN-08-2_16-S8-104	280 W
		20	MMCN-08-2_20-S8-104	280 W
		25	MMCN-08-2_25-S8-104	280 W
		30	MMCN-08-2_30-S8-104	280 W
129	112	16	MMCN-08-2_16-S8-129	380 W
		20	MMCN-08-2_20-S8-129	380 W
		25	MMCN-08-2_25-S8-129	380 W
		30	MMCN-08-2_30-S8-129	380 W

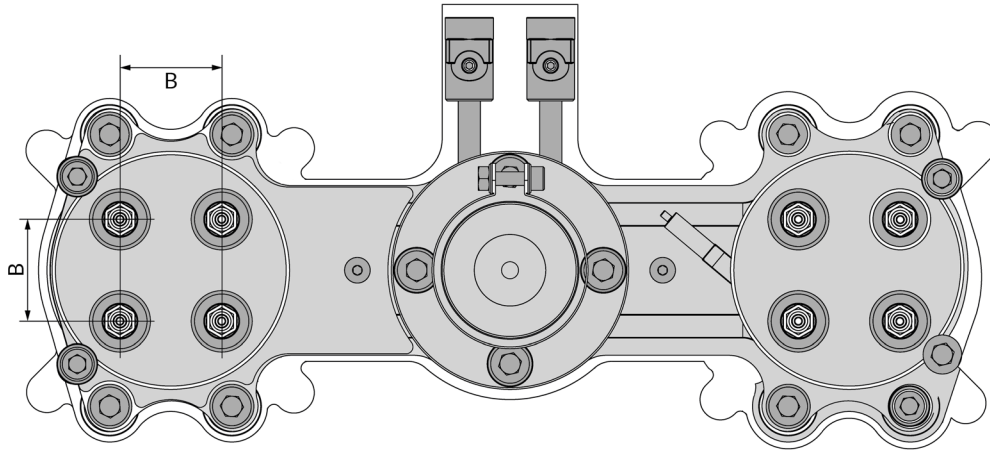
B	D ₂	D ₃	D ₄	D ₅
16	35	37	29	31
20	39	41	33	35
25	45	47	39	41
30	50	52	44	46





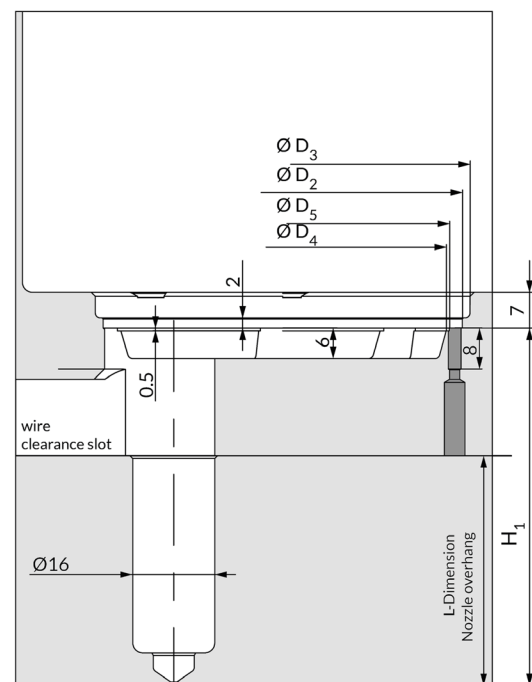
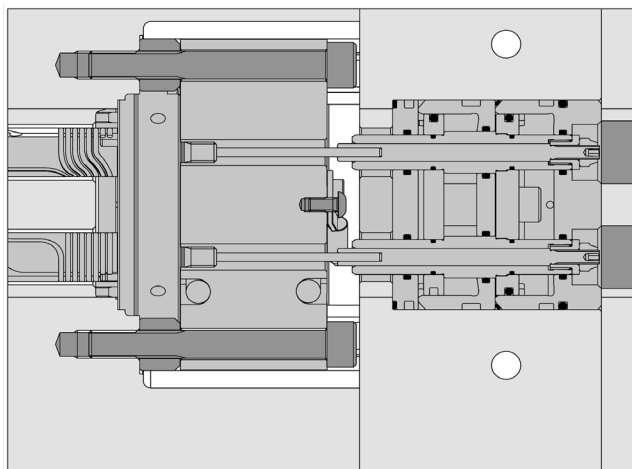
Illustrations simplified, schematically drawn and not to scale. All dimensions in mm.

Four Drops Nozzle



MMCN-08-4				
H ₀	H ₁	B	Code	DTE Watt
79	62	16	MMCN-08-4_16-S8-079	180 W
		20	MMCN-08-4_20-S8-079	180 W
		25	MMCN-08-4_25-S8-079	180 W
		30	MMCN-08-4_30-S8-079	180 W
104	87	16	MMCN-08-4_16-S8-104	280 W
		20	MMCN-08-4_20-S8-104	280 W
		25	MMCN-08-4_25-S8-104	280 W
		30	MMCN-08-4_30-S8-104	280 W
129	112	16	MMCN-08-4_16-S8-129	380 W
		20	MMCN-08-4_20-S8-129	380 W
		25	MMCN-08-4_25-S8-129	380 W
		30	MMCN-08-4_30-S8-129	380 W

B	D ₂	D ₃	D ₄	D ₅
16	50	53	44	45
20	55	58	49	50
25	65	68	59	60
30	70	73	64	65





Contact

Here you will find the main contact from Männer.

Europe / Germany

Otto Männer GmbH
Unter Gereuth 9–11
79353 Bahlingen a.K

Tel. :+49 (0) 7663 609-0
Fax :+49 (0) 7663 609-299

Internet: www.maenner-group.com
Email: info@maenner-group.com

Copyright

All text and pictures contained herein are the property of Männer.

Copyright © 2025 Männer.

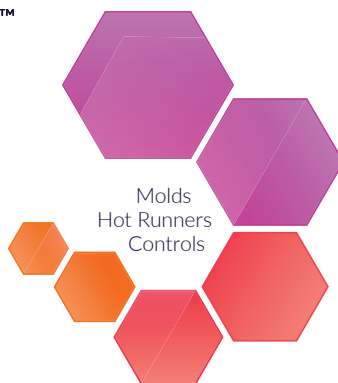
Patents

Note the copyright protection reminder pursuant to DIN ISO 16016. The specified patents are the property of Otto Männer GmbH. Their distribution and dissemination is permitted only subject to approval.

The products are protected by US, CA, CN, JP and European Community patents published on WEB. Property of Otto Männer GmbH. Not for third parties without written permission.



BARNES™
MOLDING SOLUTIONS



Barnes Molding Solutions is the expert cluster for molds, hot runners, and controls for industrial plastic injection molding. Our brands Foboha, Männer, Synventive, Thermoplay, Priamus and Gammaflux are leaders in their field. We have a comprehensive and in-depth understanding of the automotive, medical, packaging and electronics industries. We support our customers with sophisticated high-performance technologies through to customized turnkey solutions.



barnesmoldingsolutions.com

Synventive®
molding solutions

THERMOPLAY®
HotRunner-Systeme

männer®
SOLUTIONS FOR PLASTICS

FOBOHA®

PRIAMUS®

Gammaflux®